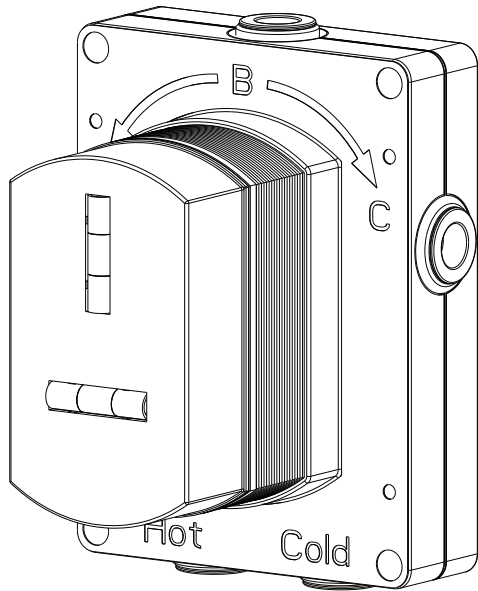


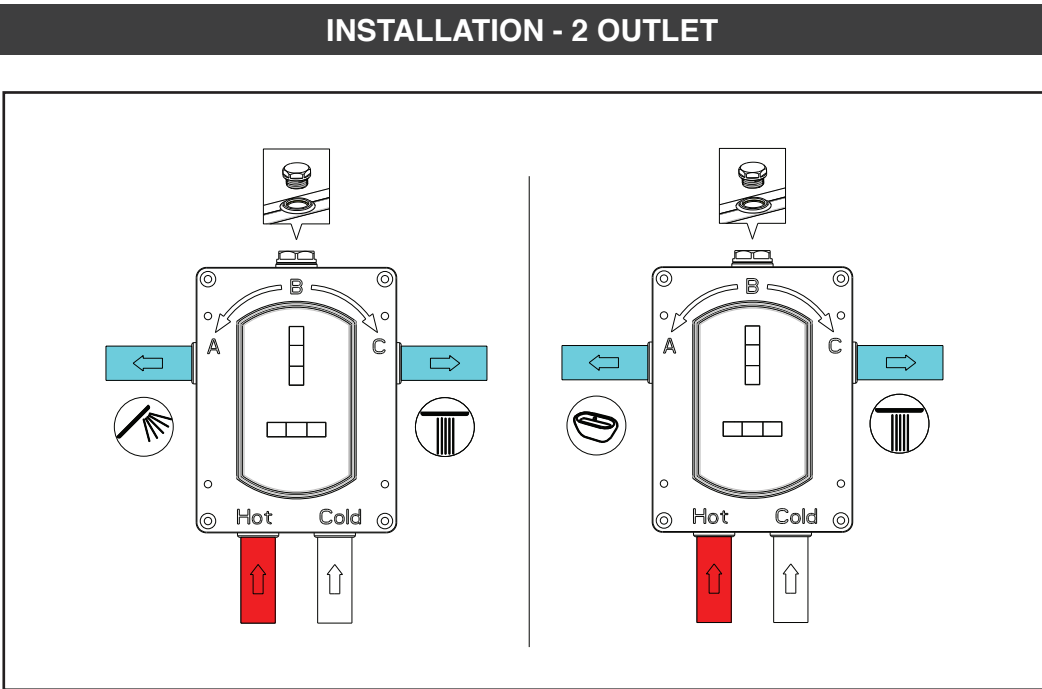
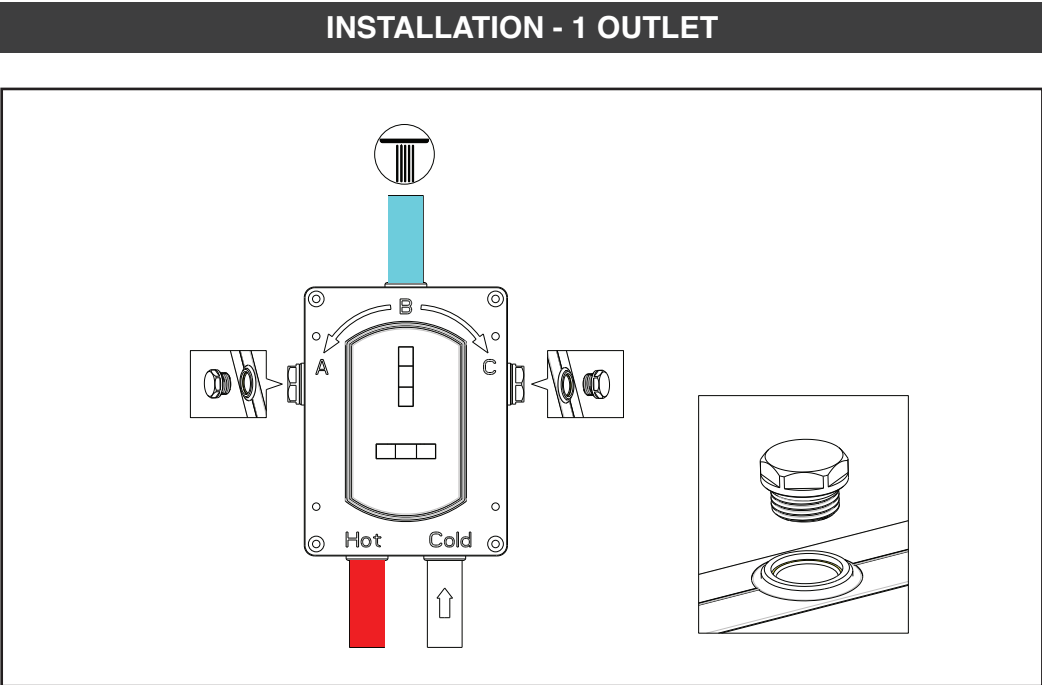
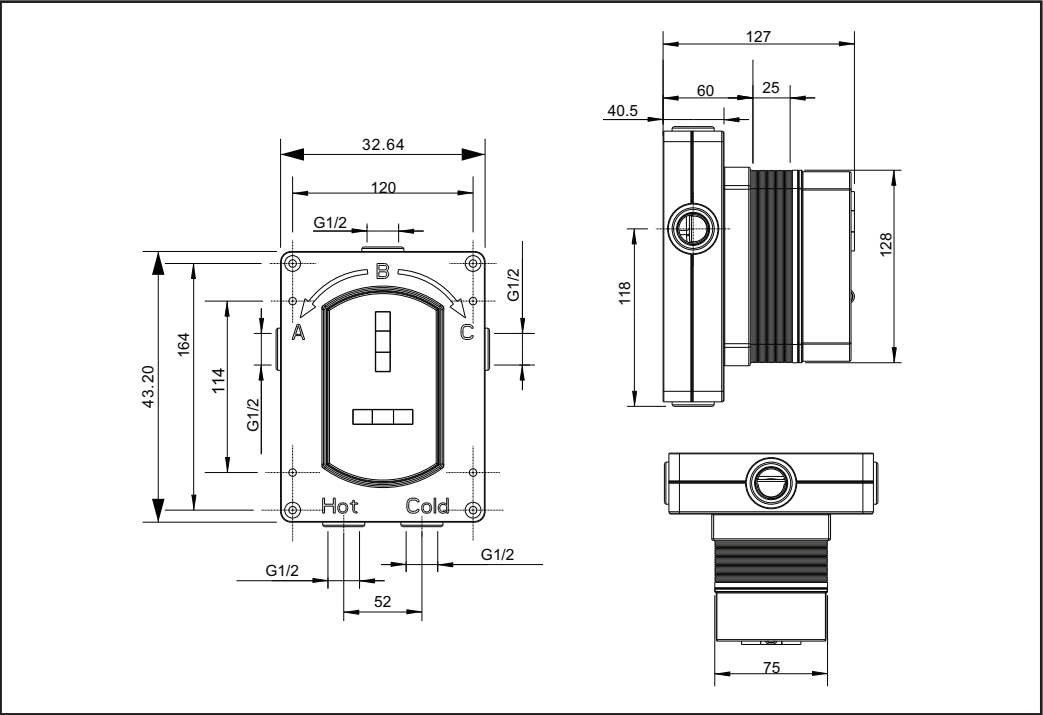
- PRE-INSTALLATION CHECKS
- Please read installation instructions fully before commencing installation.
 - Check that the product is compatible with your current requirements.
 - Before installation, please make sure you have received all items and that they are undamaged. Any damage claims after installation will not be accepted.
 - Please check for any hidden pipes and cables, electric or otherwise before drilling holes in a wall.
 - Turn off the main water supply before connecting to any existing pipe work.



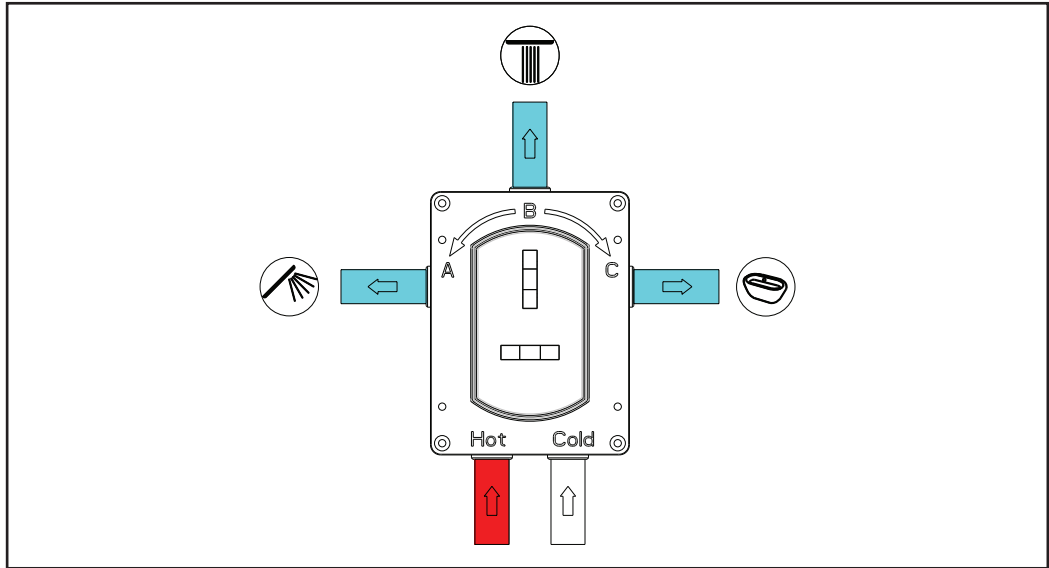
- CARE INSTRUCTION
- During installation, extra care must be taken to avoid damaging the fitting or it's finish.
 - This product is finished to a high standard. To keep the product surface in pristine condition, clean with a soft damp cloth only. To avoid limescale / watermarks from building up, it is advisable to wipe the fitting dry each time it is used.
 - Damage to the surface caused by improper cleaning/maintenance will not be covered under guarantee.
 - On no account should any bathroom cleaner be used on this product as these can contain acids that are aggressive/corrosive on finished surfaces! Do not use abrasive sponges, scouring agents, organic solvents or acidic cleaners as they may cause surface deterioration.

PARTS

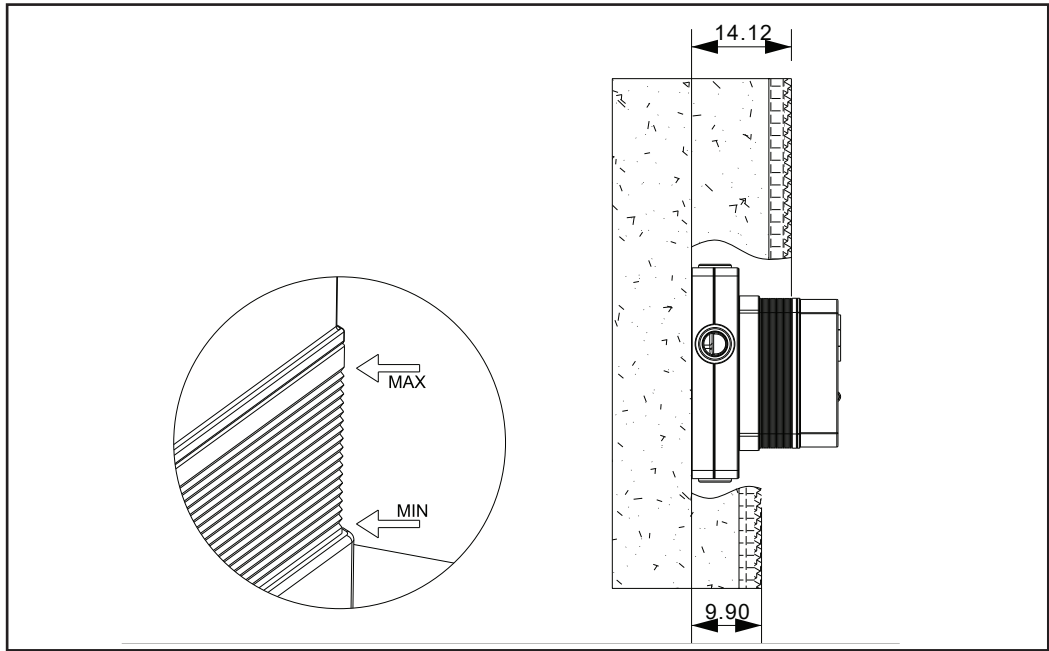
DIMENSIONS



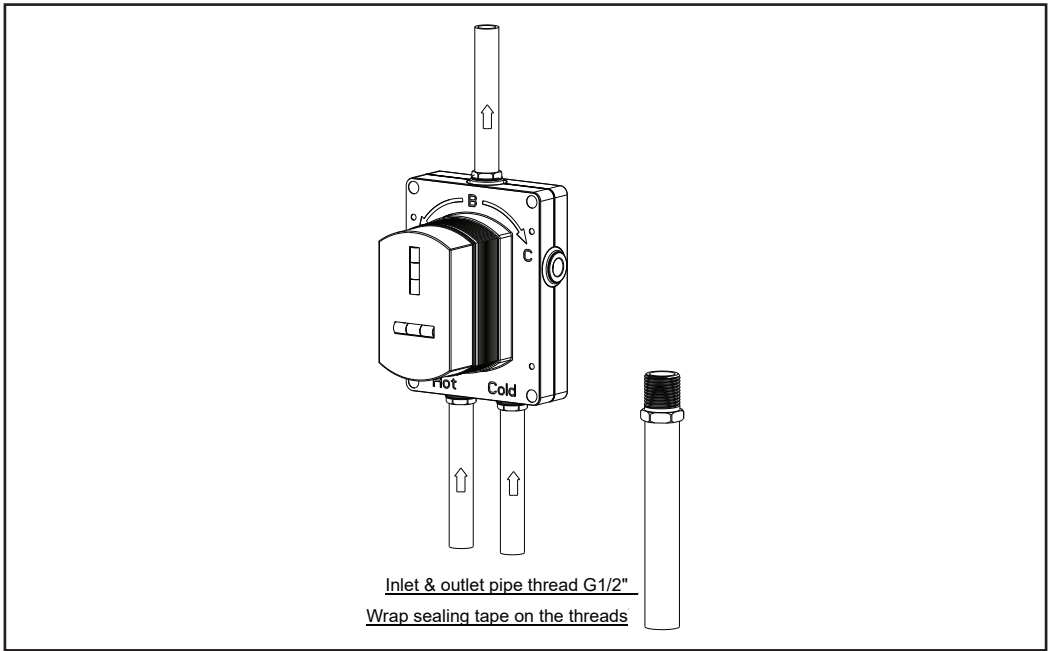
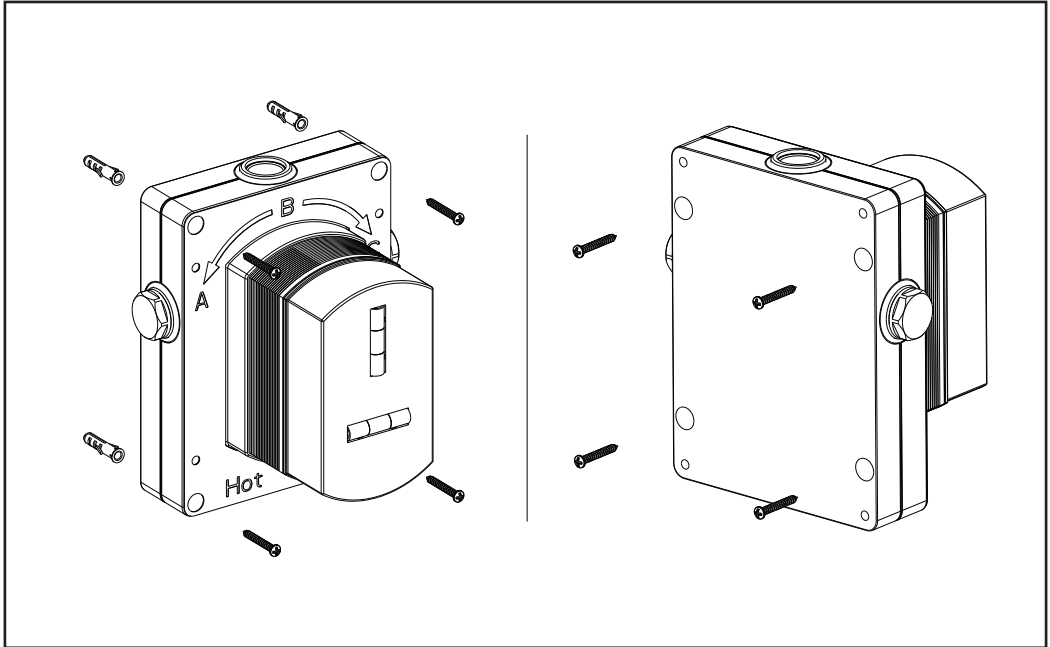
INSTALLATION - 3 OUTLET



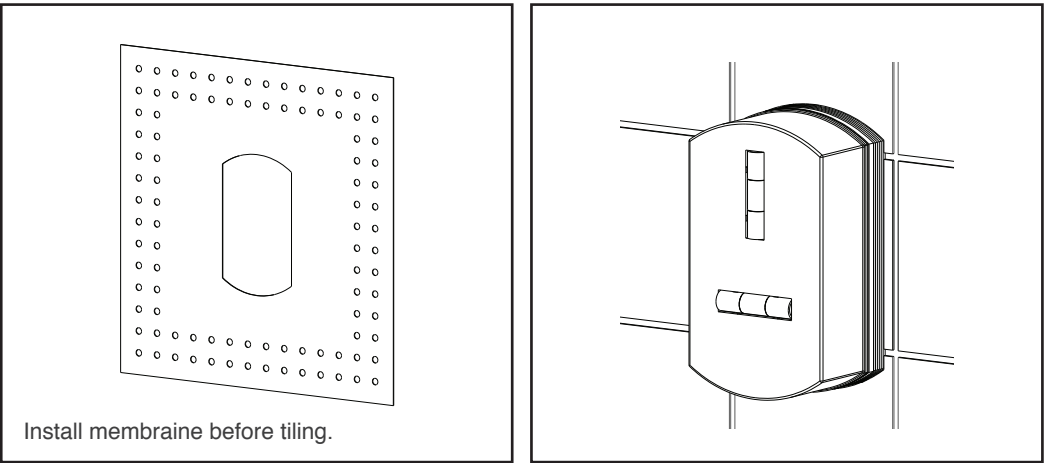
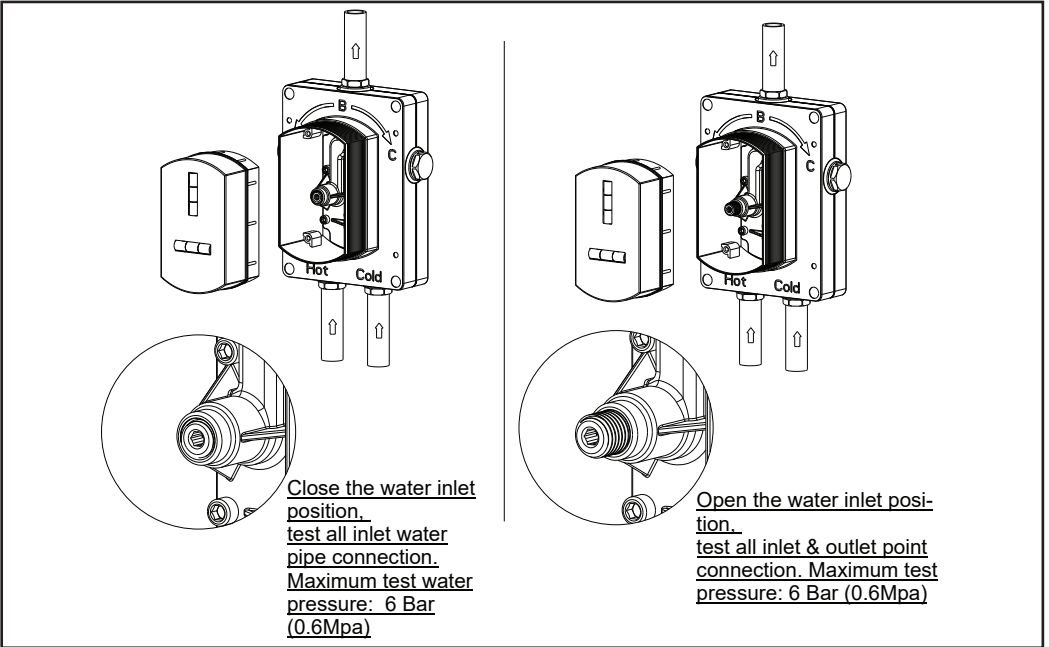
INSTALLATION



INSTALLATION



INSTALLATION



AFTER SALES & TECHNICAL SUPPORT

Our highly experienced after sales and technical support team are always on hand to help should you require technical advise or a spare part.
T: +44 (0)28 3025 9988
E: technical@mylifebathrooms.com