

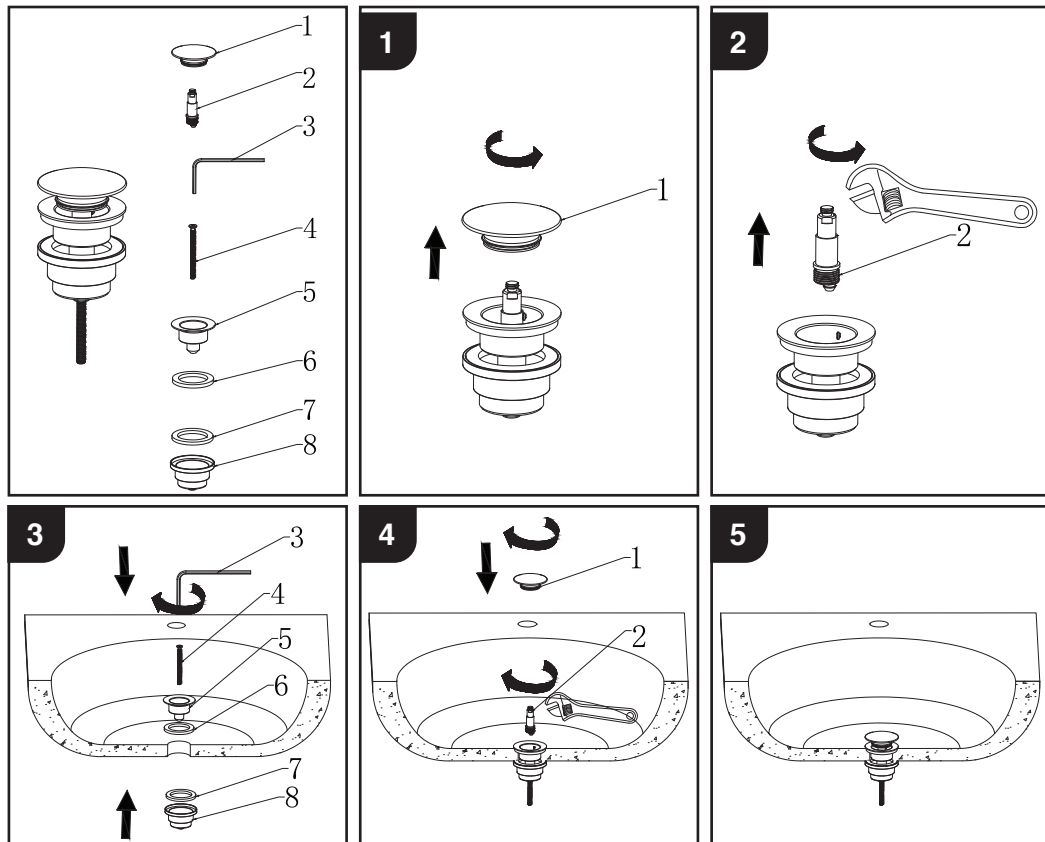
# Universal Waste Installation Manual

**THIS PRODUCT MUST BE INSTALLED  
BY A LICENSED PLUMBER**



## INSTALLATION

- Before installation, please make sure you have received all parts and that they are undamaged. Any damage claims after installation will not be accepted.



## CARE INSTRUCTION

- During installation, extra care must be taken to avoid damaging the fitting or its finish.
- This product is finished to a high standard. To keep the product surface in pristine condition, clean with a soft damp cloth only. To avoid limescale / watermarks from building up, it is advisable to wipe the fitting dry each time it is used.
- Damage to the surface caused by improper cleaning/maintenance will not be covered under guarantee.
- On no account should any bathroom cleaner be used on this product as these can contain acids that are aggressive/corrosive on finished surfaces! Do not use abrasive sponges, scouring agents, organic solvents or acidic cleaners as they may cause surface deterioration.