

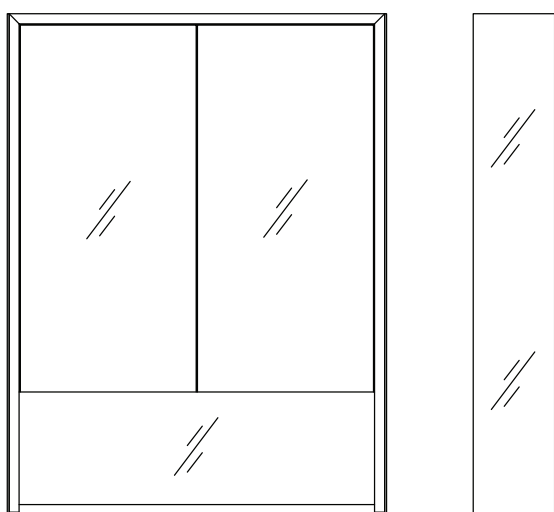
Keely LED Mirror Cabinet Installation Manual

**THIS PRODUCT MUST BE INSTALLED
BY A PROFESSIONAL ELECTRICIAN**

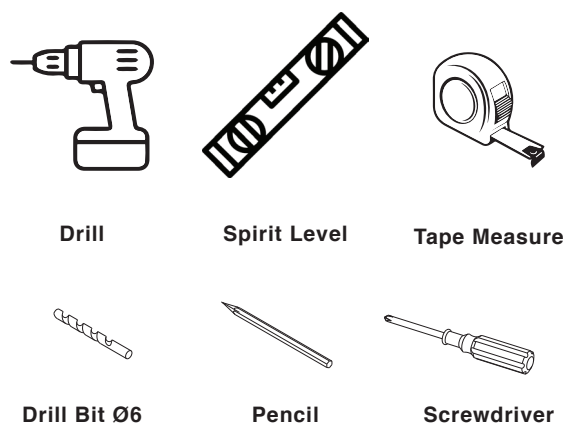


PRE-INSTALLATION CHECKS

- Check that the mirror is compatible with your current requirements.
- Please inspect all edges of this mirror before opening the clear film. Once the film is broken we won't be liable for breakages.
- Do not set Mirror / Cabinet down on a hard surface.
- Make sure the mains power is turned off before installation.
- Please check for any hidden pipes and cables, electric or otherwise before drilling holes in a wall.



TOOLS REQUIRED



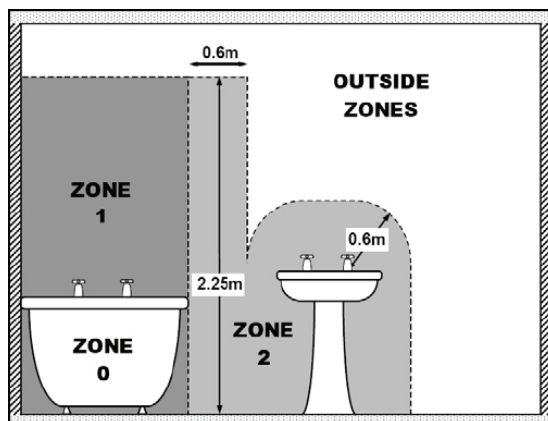
INSTALLATION ZONES

To ensure safe installation of electrical appliances in the bathroom please follow the zonal information closely. This Bathroom Mirror is suitable for use in Zone 2 and Zone 3 (Outside Zones). Note that inside a 60cm radius above a basin is also Zone 2.

Please ensure to install this mirror in accordance with the current IEE wiring regulations and relevant building regulations.

The products should only be installed on an indoor solid wall.

The installation must be executed by a professional electrician. Wrong installation may lead to product damage and personal injury. This may also invalidate the product warranty.



AFTER SALES & TECHNICAL SUPPORT

Our highly experienced after sales and technical support team are always on hand to help should you require technical advice or a spare part.

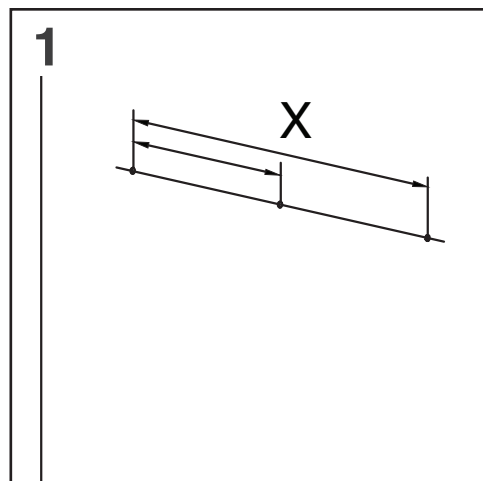
T: +44 (0)28 3025 9988

E: technical@mylifebathrooms.com

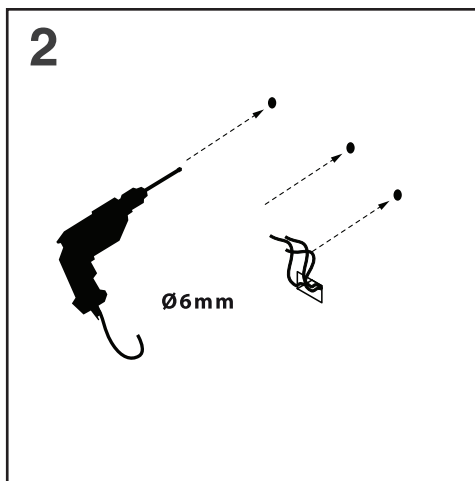
Keely LED Mirror Cabinet Installation Manual



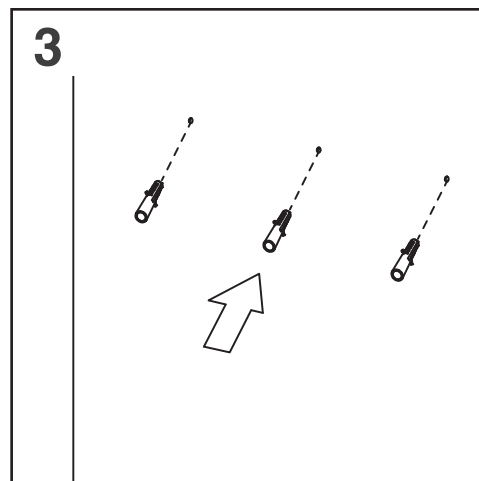
LED MIRROR CABINET INSTALLATION



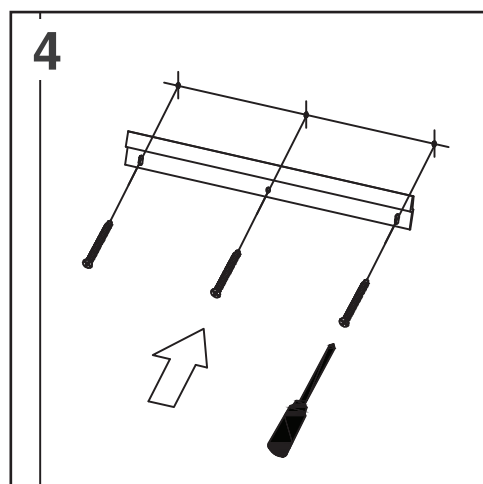
Using the hanging bracket and a spirit level mark the screw positions on the wall. *Note the Infrared Sensor must be installed with a minimum of 150mm between the sensor & any solid object or reflective surface.



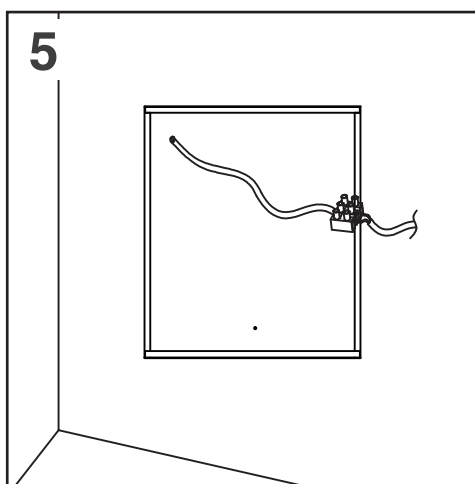
Use the drill with an appropriate drill bit to make holes at the marked places, and use a ceramic drill bit if the wall surface is made of ceramic tiles.



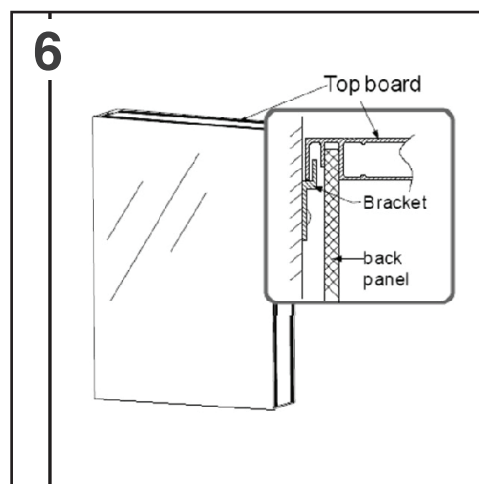
Insert the wall plugs. NOTE: Wall plugs supplied are only suitable for solid stone / brick walls. For plasterboard use specialist wall plugs available from any DIY / hardware store.



Use a screwdriver to tighten the screws securely affixing the hanging bracket to the wall.



Ensuring the power is switched off, use a terminal block to connect the three-core exposed wires with those reserved on the wall (see wiring diagram below).

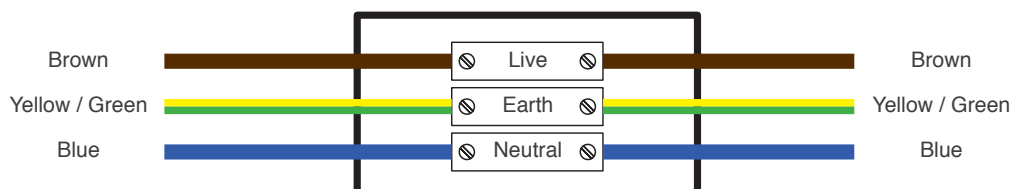


Hang the cabinet on the hanging bracket. Then install the shelf clips to hold the glass shelves in place. Finally switch on the power and test the product.

WIRING DIAGRAM

COLOUR CODING:

L - Live = Brown
N - Neutral = Blue
⊕ - Earth = Green & Yellow

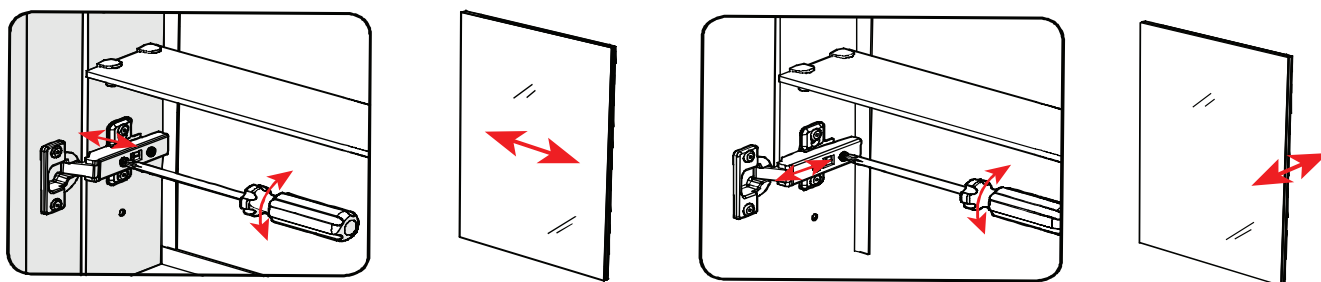


Keely LED Mirror Cabinet Installation Manual



DOOR ALIGNMENT

Adjust the cabinet doors using the adjustment screws on the hinges. As shown below.



LIGHT OPERATING INSTRUCTIONS

TURNING ON & OFF

To turn ON or OFF the LEDs, wave your hand across the IR sensor (The demister pad will be ON when the lights are ON).

CHANGING THE LIGHT INTENSITY

Turn ON the mirror light and hold your hand in front of the IR sensor until the desired brightness is achieved.

CHANGING THE LIGHT FROM COOL - WARM

Turn OFF the mirror light and hold your hand in front of the IR sensor. The mirror will cycle through the colour range.

MEMORY FUNCTION

The mirror will remember your preselected colour and light intensity settings

CARE INSTRUCTIONS

- Do not use abrasives or solvents when cleaning this product.
- Wipe off all water spillages as soon as possible using a soft, damp cloth.