

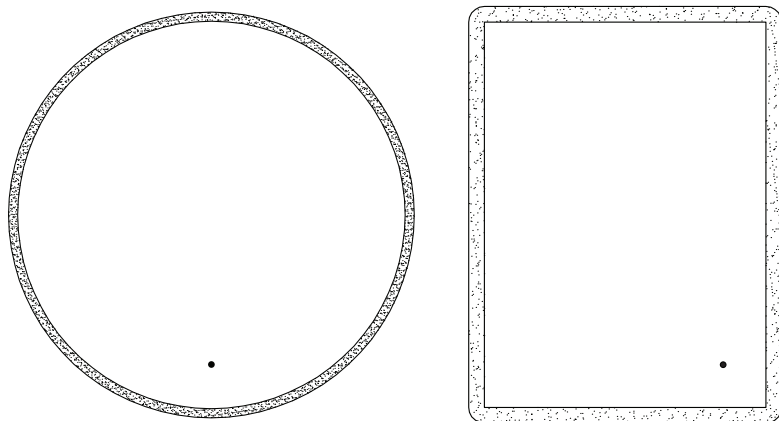
# LED Mirror Installation Manual

**THIS PRODUCT MUST BE INSTALLED  
BY A PROFESSIONAL ELECTRICIAN**

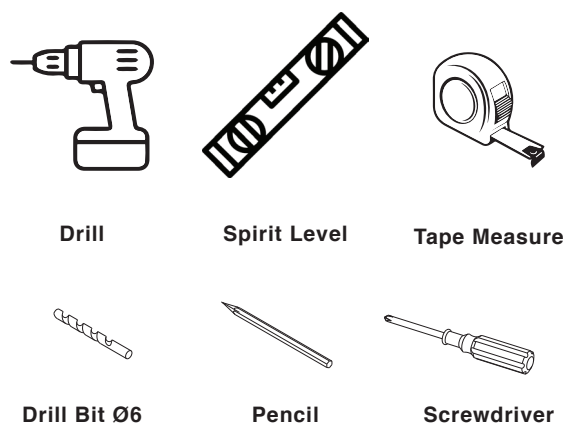


## PRE-INSTALLATION CHECKS

- Check that the mirror is compatible with your current requirements.
- Please inspect all edges of this mirror before opening the clear film. Once the film is broken we won't be liable for breakages.
- Do not set Mirror / Cabinet down on a hard surface.
- Make sure the mains power is turned off before installation.
- Please check for any hidden pipes and cables, electric or otherwise before drilling holes in a wall.



## TOOLS REQUIRED



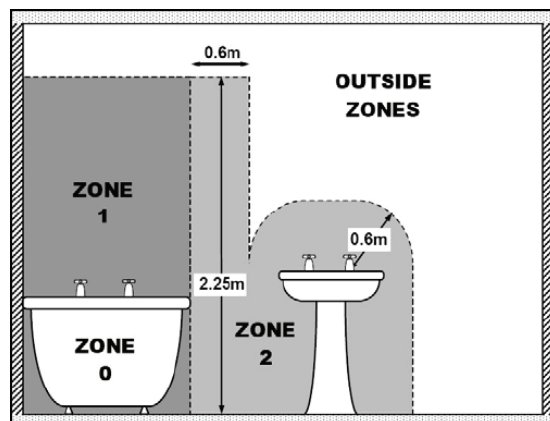
## INSTALLATION ZONES

To ensure safe installation of electrical appliances in the bathroom please follow the zonal information closely. This Bathroom Mirror is suitable for use in Zone 2 and Zone 3 (Outside Zones). Note that inside a 60cm radius above a basin is also Zone 2.

Please ensure to install this mirror in accordance with the current IEE wiring regulations and relevant building regulations.

The products should only be installed on an indoor solid wall.

The installation must be executed by a professional electrician. Wrong installation may lead to product damage and personal injury. This may also invalidate the product warranty.



## AFTER SALES & TECHNICAL SUPPORT

Our highly experienced after sales and technical support team are always on hand to help should you require technical advice or a spare part.

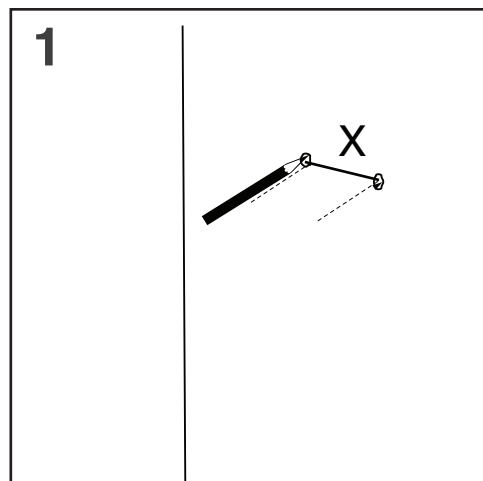
T: +44 (0)28 3025 9988

E: [technical@mylifebathrooms.com](mailto:technical@mylifebathrooms.com)

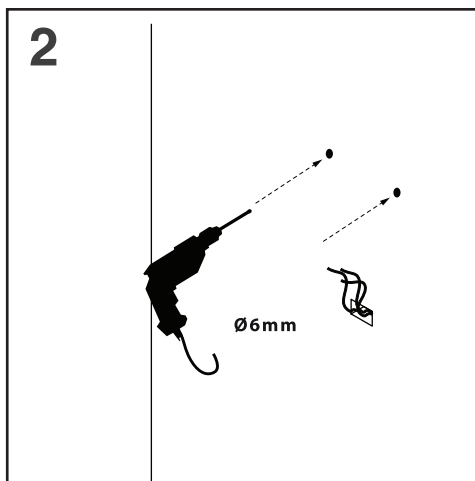
# LED Mirror Installation Manual



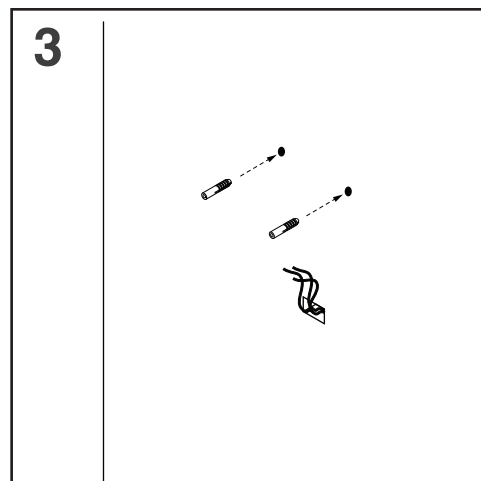
## ROUND MIRROR INSTALLATION



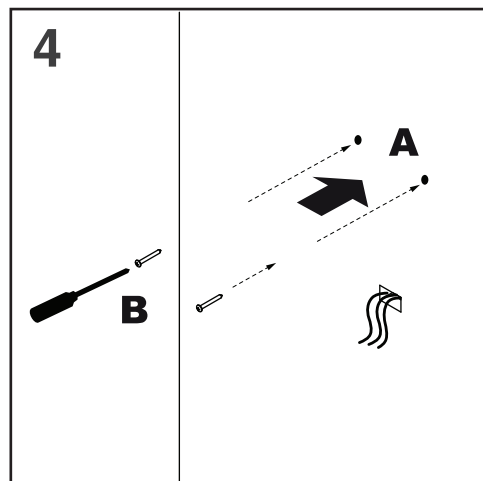
Ensure the wall will support the mirror.  
Then use a tape to measure the mirror fitting positions and mark the wall for screw positions.



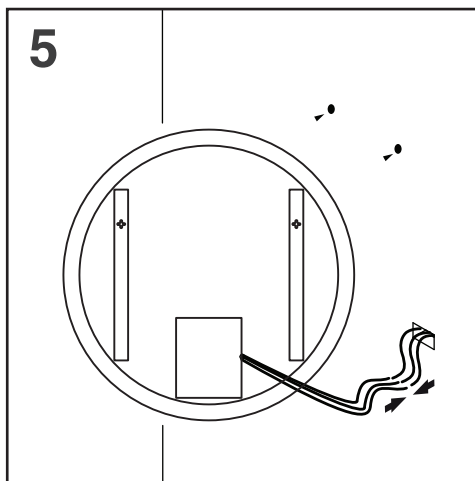
Use the drill with an appropriate drill bit to make two holes at the marked places, and use a ceramic drill bit if the wall surface is made of ceramic tiles.



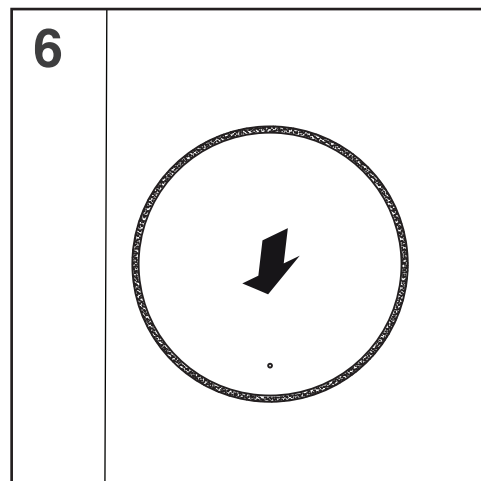
Insert the wall plugs. **NOTE:** The wall plugs supplied are only suitable for solid stone / brick walls. For plasterboard use specialist wall plugs available from any DIY or hardware store.



Use the screwdriver to tighten the screws into the holes (Leave the screw head 8 - 12mm exposed)



Ensuring the power is switched off, use a terminal block to connect the three-core exposed wires with those reserved on the wall (see wiring diagram below).

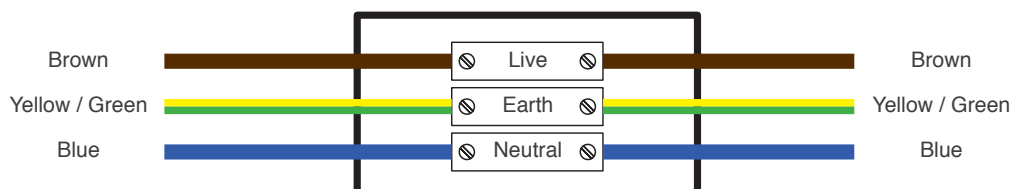


Hang the mirror on the exposed screws and then settle the mirror into the slots. Finally switch on the power and test the product.

## WIRING DIAGRAM

### COLOUR CODING:

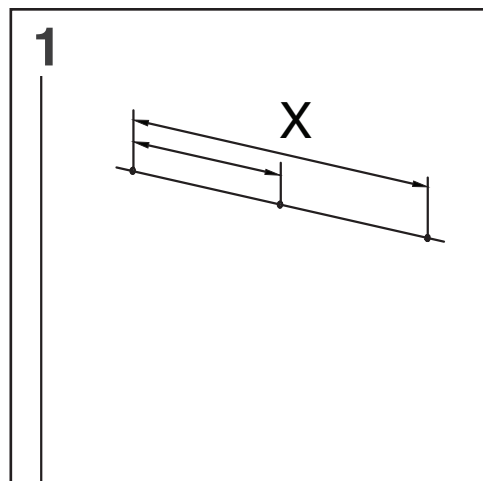
L - Live = Brown  
N - Neutral = Blue  
⊕ - Earth = Green & Yellow



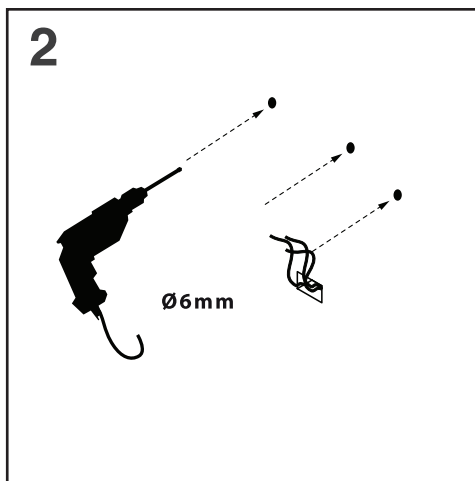
# LED Mirror Installation Manual



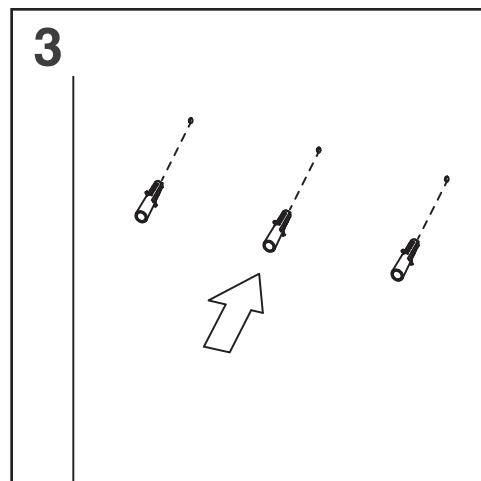
## RECTANGLE MIRROR INSTALLATION



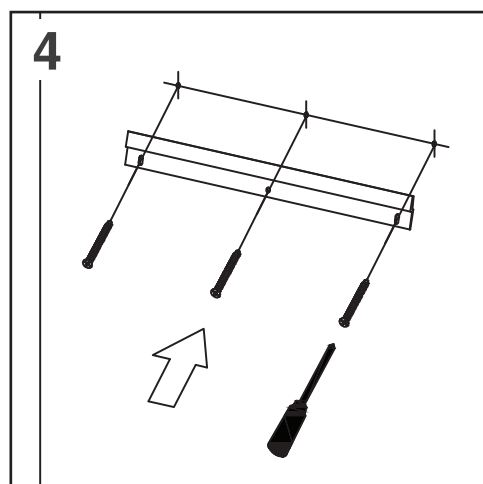
Using the hanging bracket and a spirit level mark the screw positions on the wall.



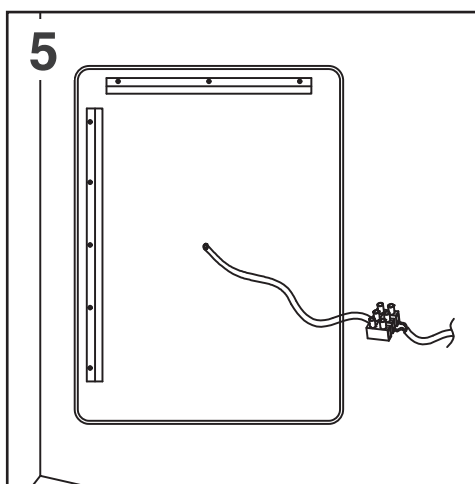
Use the drill with an appropriate drill bit to make holes at the marked places, and use a ceramic drill bit if the wall surface is made of ceramic tiles.



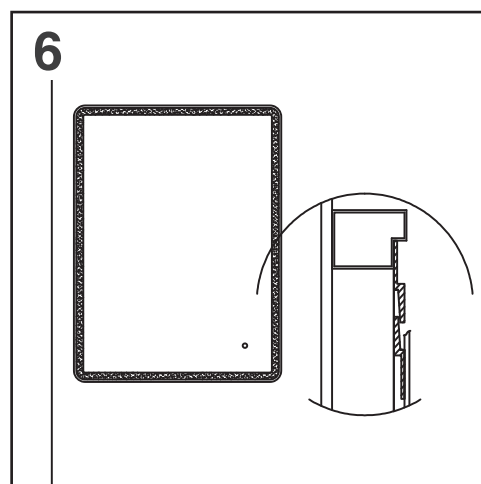
Insert the wall plugs. NOTE: Wall plugs supplied are only suitable for solid stone / brick walls. For plasterboard use specialist wall plugs available from any DIY / hardware store.



Use a screwdriver to tighten the screws securely affixing the hanging bracket to the wall.



Ensuring the power is switched off, use a terminal block to connect the three-core exposed wires with those reserved on the wall (see wiring diagram below).

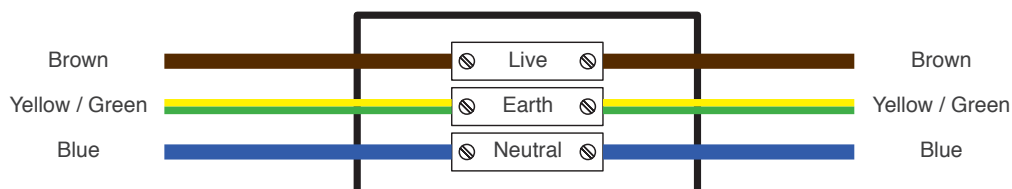


Hang the mirror on the hanging bracket. Finally switch on the power and test the product.

## WIRING DIAGRAM

### COLOUR CODING:

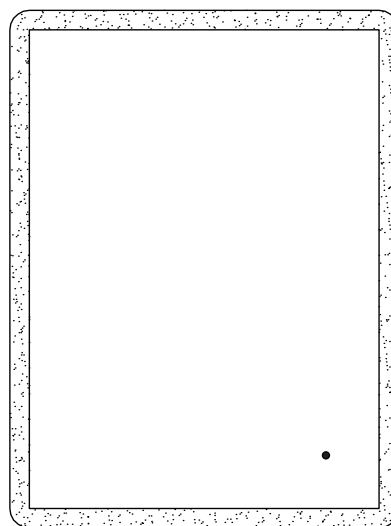
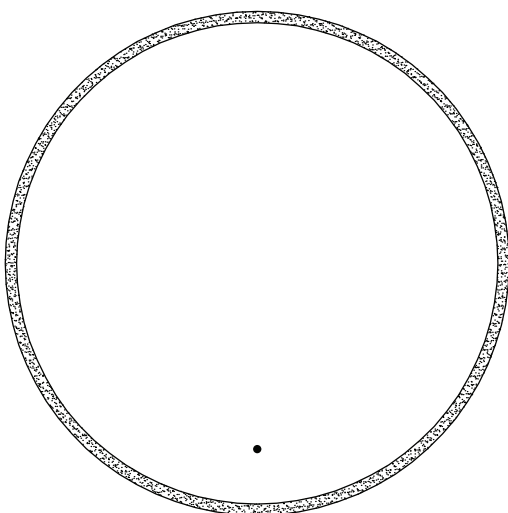
L - Live = Brown  
N - Neutral = Blue  
⊕ - Earth = Green & Yellow



# LED Mirror Installation Manual



## OPERATING INSTRUCTIONS



### **TURNING ON & OFF**

To turn ON or OFF the LEDs, wave your hand across the contactless sensor (The demister pad will be ON when the lights are ON).

### **CHANGING THE LIGHT INTENSITY**

Turn ON the mirror light and hold your hand in front of the contactless sensor until the desired brightness is achieved.

### **CHANGING THE LIGHT FROM COOL - WARM**

Turn OFF the mirror light and hold your hand in front of the contactless sensor. The mirror will cycle through the colour range.

### **MEMORY FUNCTION**

The mirror will remember your preselected colour and light intensity settings

## CARE INSTRUCTIONS

- Do not use abrasives or solvents when cleaning this product.
- Wipe off all water spillages as soon as possible using a soft, damp cloth.