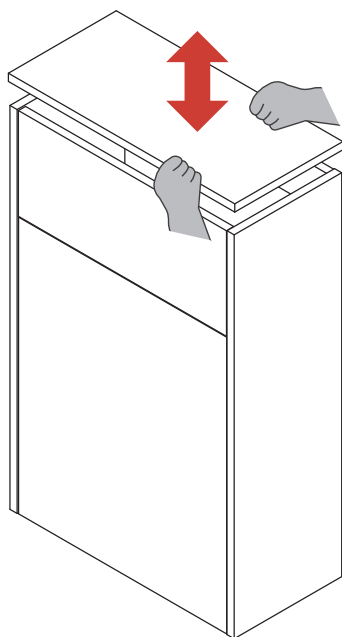


# Calia Back To Wall Unit Installation Manual



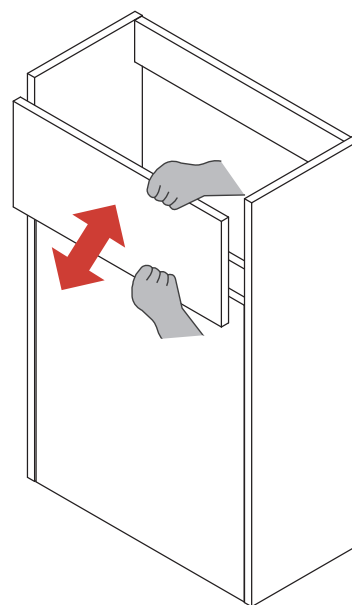
## INSTALLATION

1



Removing and attaching the top panel.

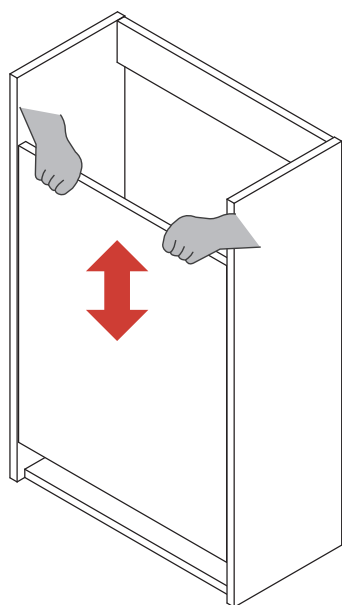
2



Removing and attaching the upper front panel.

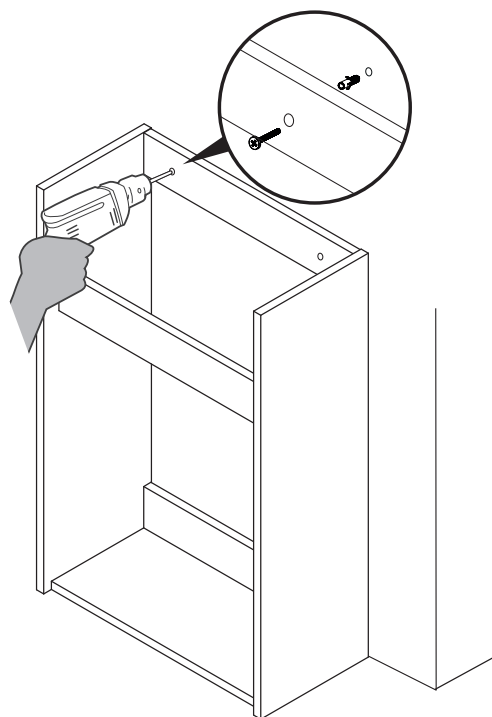
 Panel clips may break if you pull them off at an angle. Make sure to pull them off straight.

3



Removing and attaching the lower front panel.

4



Drill two holes to fix the unit to the wall.

## CARE INSTRUCTION

Please note that although these units have been designed to last for years, you will help maintain the products by following these guide lines.

**Do not use solvent or abrasive cleaners to clean the unit and basin as they can cause permanent damage to the finish.**

### MELAMINE, PAINTING & FOIL WRAPPED DOORS

Occasional marks, can in most cases, be removed with a soft damp cloth. More persistent marks can be removed using a non silicone based furniture cleaner. Hot soapy water should be avoided as it can cause the melamine or foil to peel. Once the mark is removed, the area should be wiped over with a damp cloth to remove any excess and dried with a soft clean cloth.

### CARCASE COMPONENTS

Do not use polish on any surface. A damp cloth with soapy water will clean off most marks or spills.

### DRAWERS, RUNNERS, DOOR HINGES

These should be wiped out with a damp soapy cloth and wiped dry with a soft cloth where necessary. The roller runners and hinges are lubricated and should not be cleaned with a degreasing agent as this will affect the action of moving parts. Never lean on partially or fully opened doors and drawers in order to gain access to the units. The hinges are specified to adequately support the weight of the doors, plus small additional weights such as wire accessories. It is advised that once the bathroom has been installed you should check every six months that all screws on the hinges are tight.

### BASINS

Although the basin is hard wearing, sharp objects may scratch the surface. Care should be taken not to drop any heavy objects onto the basin as the surface may crack. For cleaning, a damp soapy cloth will clean off most spills. Corrosive liquids should be wiped off immediately.

### TEMPERATURE & HUMIDITY

Avoid excessive change in temperature and humidity. Always try to ensure adequate ventilation.

### GENERAL CARE, SPILLAGE & SPLASHES

Do not allow any spillages or splashes, even water, lie on any surface. All spillages and splashes should be wiped dry, failure to do so may shorten the life expectancy of the product and invalidate any guarantees.

## AFTER SALES & TECHNICAL SUPPORT

Our highly experienced after sales and technical support team are always on hand to help should you require technical advise or a spare part.

T: +44 (0)28 3025 9988

E: [technical@mylifebathrooms.com](mailto:technical@mylifebathrooms.com)